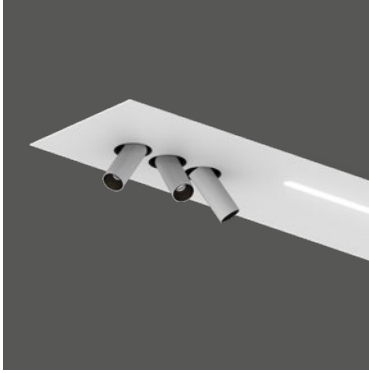


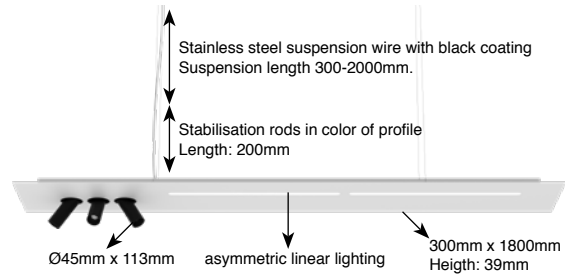
Tektus 45 Linear 1800mm

Technical Datasheet

DOXIS
LIGHTING FACTORY



General	
Type	Suspended luminaire
Material	Aluminium + Steel
Lamp Type	COB LED
Adjustable	Yes, Spots (60°/359°)
Dimmable	Yes
Cooling	Passive
Energy Class	A++
Weight	n.a.
Photobiol. Safety	RG1
Class	class I



IP20 960°C LED

Features:

High efficiency LED luminaire, equipped with a Bridgelux COB LED.
High quality components.
Various colors available.

Specifications

Art. nr.	Length	Lightsource INCLUDED	CCT - CRI	Light output* LED / System	Power** LED / System (current)	Power supply INCLUDED	SDCM
TEKTUS 45 Linear Down:							
1608.AA.24.927.XX	1800mm	Spots: (3x) Bridgelux Vero 10 LED Linear Down: Philips Fortimo LED Modules	2700K - Ra90	Spots: (3x) 1100lm / 772lm Linear down: 4020lm / n.a.	Spots: (3x) 8.9W / 10.2W Linear down: 24.0W / 27.6W	Non dimmable driver 2 separate circuits***	3
1608.AA.24.930.XX	1800mm	Spots: (3x) Bridgelux Vero 10 LED Linear Down: Philips Fortimo LED Modules	3000K - Ra90	Spots: (3x) 1156lm / 811lm Linear down: 4160lm / n.a.	Spots: (3x) 8.9W / 10.2W Linear down: 24.0W / 27.6W	Non dimmable driver 2 separate circuits***	3
1608.AA.24.940.XX	1800mm	Spots: (3x) Bridgelux Vero 10 LED Linear Down: Philips Fortimo LED Modules	4000K - Ra90	Spots: (3x) 1172lm / 822lm Linear down: 4400lm / n.a.	Spots: (3x) 8.9W / 10.2W Linear down: 24.0W / 27.6W	Non dimmable driver 2 separate circuits***	3
1608.AA.26.927.XX	1800mm	Spots: (3x) Bridgelux Vero 10 LED Linear Down: Philips Fortimo LED Modules	2700K - Ra90	Spots: (3x) 1100lm / 772lm Linear down: 4020lm / n.a.	Spots: (3x) 8.9W / 10.2W Linear down: 24.0W / 27.6W	Touch & DALI dim. driver 2 separate circuits***	3
1608.AA.26.930.XX	1800mm	Spots: (3x) Bridgelux Vero 10 LED Linear Down: Philips Fortimo LED Modules	3000K - Ra90	Spots: (3x) 1156lm / 811lm Linear down: 4160lm / n.a.	Spots: (3x) 8.9W / 10.2W Linear down: 24.0W / 27.6W	Touch & DALI dim. driver 2 separate circuits***	3
1608.AA.26.940.XX	1800mm	Spots: (3x) Bridgelux Vero 10 LED Linear Down: Philips Fortimo LED Modules	4000K - Ra90	Spots: (3x) 1172lm / 822lm Linear down: 4400lm / n.a.	Spots: (3x) 8.9W / 10.2W Linear down: 24.0W / 27.6W	Touch & DALI dim. driver 2 separate circuits***	3
TEKTUS 45 Linear Up&Down:							
1601.AA.24.927.XX	1800mm	Spots: (3x) Bridgelux Vero 10 LED Linear Down: Philips Fortimo LED Modules Linear Up: Philips Fortimo LED Modules	2700K - Ra90	Spots: (3x) 1100lm / 772lm Linear down: 4020lm / n.a. Linear up: 4020lm / n.a.	Spots: (3x) 8.9W / 10.2W Linear down: 24.0W / 27.6W Linear up: 24.0W / 27.6W	Non dimmable driver 3 separate circuits***	3
1601.AA.24.930.XX	1800mm	Spots: (3x) Bridgelux Vero 10 LED Linear Down: Philips Fortimo LED Modules Linear Up: Philips Fortimo LED Modules	3000K - Ra90	Spots: (3x) 1156lm / 811lm Linear down: 4160lm / n.a. Linear up: 4160lm / n.a.	Spots: (3x) 8.9W / 10.2W Linear down: 24.0W / 27.6W Linear up: 24.0W / 27.6W	Non dimmable driver 3 separate circuits***	3
1601.AA.24.940.XX	1800mm	Spots: (3x) Bridgelux Vero 10 LED Linear Down: Philips Fortimo LED Modules Linear Up: Philips Fortimo LED Modules	4000K - Ra90	Spots: (3x) 1172lm / 822lm Linear down: 4400lm / n.a. Linear up: 4400lm / n.a.	Spots: (3x) 8.9W / 10.2W Linear down: 24.0W / 27.6W Linear up: 24.0W / 27.6W	Non dimmable driver 3 separate circuits***	3
1601.AA.26.927.XX	1800mm	Spots: (3x) Bridgelux Vero 10 LED Linear Down: Philips Fortimo LED Modules Linear Up: Philips Fortimo LED Modules	2700K - Ra90	Spots: (3x) 1100lm / 772lm Linear down: 4020lm / n.a. Linear up: 4020lm / n.a.	Spots: (3x) 8.9W / 10.2W Linear down: 24.0W / 27.6W Linear up: 24.0W / 27.6W	Touch & DALI dim. driver 3 separate circuits***	3
1601.AA.26.930.XX	1800mm	Spots: (3x) Bridgelux Vero 10 LED Linear Down: Philips Fortimo LED Modules Linear Up: Philips Fortimo LED Modules	3000K - Ra90	Spots: (3x) 1156lm / 811lm Linear down: 4160lm / n.a. Linear up: 4160lm / n.a.	Spots: (3x) 8.9W / 10.2W Linear down: 24.0W / 27.6W Linear up: 24.0W / 27.6W	Touch & DALI dim. driver 3 separate circuits***	3
1601.AA.26.940.XX	1800mm	Spots: (3x) Bridgelux Vero 10 LED Linear Down: Philips Fortimo LED Modules Linear Up: Philips Fortimo LED Modules	4000K - Ra90	Spots: (3x) 1172lm / 822lm Linear down: 4400lm / n.a. Linear up: 4400lm / n.a.	Spots: (3x) 8.9W / 10.2W Linear down: 24.0W / 27.6W Linear up: 24.0W / 27.6W	Touch & DALI dim. driver 3 separate circuits***	3

0000.AA.00.000.XX
 29 - 29° Reflector - 0000.29.00.000.00
 40 - 40° Reflector - 0000.40.00.000.00
 51 - 51° Reflector - 0000.51.00.000.00

* LED light output represent values of LED modules. System light output incl. light losses of luminaire
 ** LED power values excl. driver. System power values incl. driver power consumption (driver efficiency of 87% used as reference)

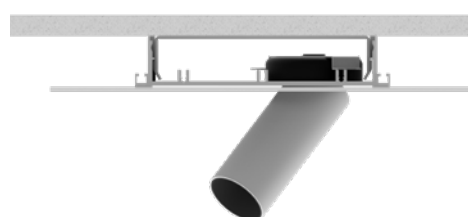
Lumen Maintenance Bridgelux COB LED (Tc=85°C)		
L70B50: >100 000 hrs	L70B20: >100 000 hrs	L70B10: >100 000 hrs
L80B50: >100 000 hrs	L80B20: >100 000 hrs	L80B10: >100 000 hrs
L90B50: >100 000 hrs	L90B20: >50 000 hrs	L90B10: >50 000 hrs

Lumen Maintenance Philips Fortimo LED modules (Tc=45°C)		
L70B50: >70 000 hrs	L70B20: >70 000 hrs	L70B10: >70 000 hrs
L80B50: >70 000 hrs	L80B20: >70 000 hrs	L80B10: 70 000 hrs
L90B50: 35 000 hrs	L90B20: 30 000 hrs	L90B10: 30 000 hrs

Available colors - 0000.00.000.XX
 Other RAL colors on request.



On Request
 Surface mounted version available



*****Connection:**

- Non dim: 5-wire cable (L1, N, PE, L2, L3). Up, down and spots on separately switchable circuits with common N. If only 3 wires are available, L1, L2 and L3 can be connected together. Separate switching will not be possible.
- DALI: 5-wire cable (L, N, PE, DA1, DA2). Up, down and spots on three separate DALI channels.
- Touch dimmable ON REQUEST (L, N, PA, Touch L1, Touch L2, Touch L3) Up, down and spots on separate circuits with common N

